

ProBio(QR)

Biometric Access Control Terminal with QR Code and Facial Recognition Technology



Compatible with



ProBio(QR) is a biometric identification terminal that features ZKTeco's high-speed facial recognition algorithm ZKFACE Version 7.0. It has an extremely high recognition speed and low error rate. Besides, it can effectively avoid duplicating registration.

What's more? ProBio(QR) is also powered by QR Code Scanning technology with an excellent mini QR code reader. It can read 1D/2D barcodes, such as QR code, PDF417, Data Matrix, MicroPDF417, Aztec, from smartphones, tablets & papers for more efficient and effective work flow. It can scan Dynamic QR Codes on the ZKBioSecurity Mobile App too.

Together with ZKTeco's newly released QR Code Access Control Management Solution, the terminal enables easy yet practical and more secure access control.

Features



Advanced Facial Recognition Technology



Simple Management & Scalability



Multiple Verification Methods:
Face / QR Code / Card / Password



Built-in Camera
* Event Snapshot
* User Photo



QR Code Identification
for Access Control



Changing QR Code Images
per 10s to 30s

Specifications Ⓞ: GL Exclusive Feature

Capacity

Faces	2,000 (1:N) / 4,000 (1:1)
Cards	10,000
Transactions	100,000
User Photos	4,000
Event Photos	2,000

Communication

- Ⓞ TCP/IP, RS485 (For Slave Reader)
- USB Host
- Wiegand Input / Output
- Security Relay Box

Access Control Interface

- Lock Relay Output
- Alarm Output / Auxiliary Input
- Exit Button / Door Sensor
- Doorbell Output

Hardware

- Ⓞ 1.2GHz High Speed CPU
- Ⓞ Memory 128MB RAM / 256MB Flash
- Mini QR Code Reader
- Ⓞ 2.8-inch TFT-LCD Touch Screen
- 125kHz EM Card / IC Card (Optional)
- Hi-Fi Voice & Indicator
- Tamper Switch Alarm
- Ⓞ Dual IR Camera

Standard Functions

- Access Levels / Groups / Holidays
- DST / Bell Scheduling
- Duress Mode (Password)
- Anti-Passback
- Record Query
- Personalized Wallpaper & Screen Saver
- Ⓞ QR Code as the Mobile Credential

Special Functions

- Ⓞ Multiple Verification Methods
- Ⓞ QR Code and Barcode Verification
- Ⓞ Event Snapshot
- User Photo
- ZK Encrypted Card (Optional)
- Extra Features Customization (such as driving license reading)

Compatibility

- Ⓞ RS485 and Wiegand Slave Readers
- ZKBioSecurity Software

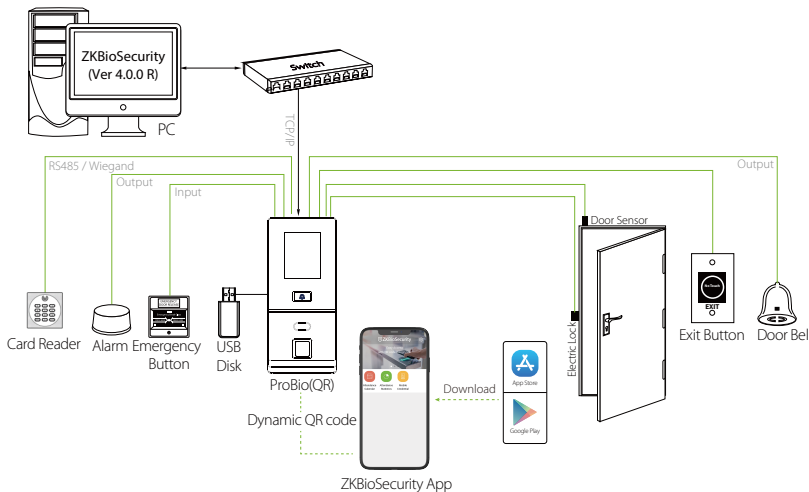
Additional Info

Working Temperature: -10°C to 50°C
 Dimensions: 190.8 × 85 × 103 mm
 Algorithm: ZKFace V7.0
 Facial Recognition Accuracy: FAR≤0.001%;
 FRR≤1%
 Package Includes 12V 3A Power Supply

Power

Operating Voltage DC 12V
 Current Draw <500mA

Configuration



Dimensions (mm)

